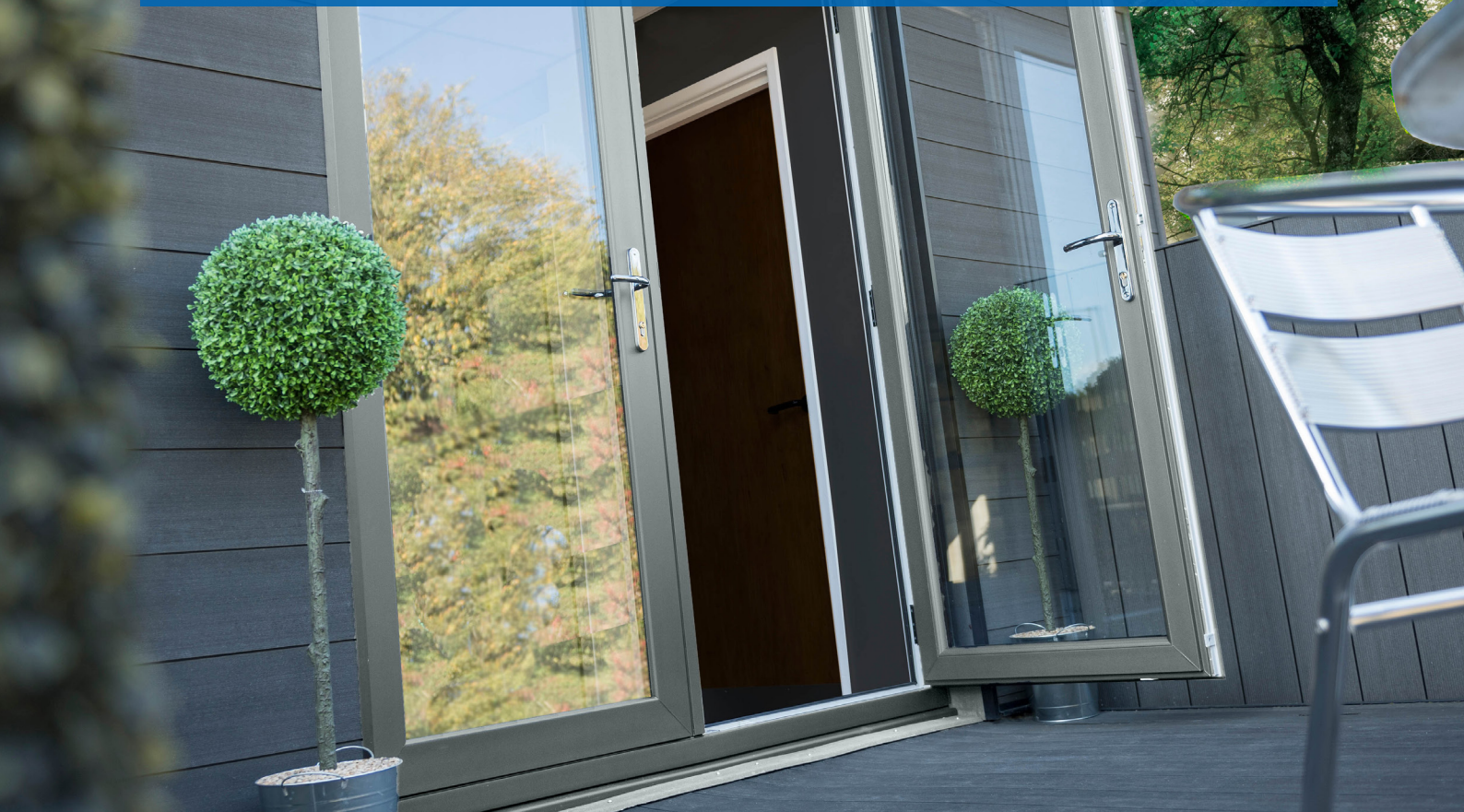


Care Instructions for PVC **WINDOWS & DOORS**



PVC windows and doors offer many advantages compared to other materials.

They are extremely easy to care for and require minimal maintenance. However it's not just about the right windows, but also about the right care.

You should still clean and care for PVC windows and doors regularly – especially the glazing.

Correct handling will ensure you long and lasting enjoyment.

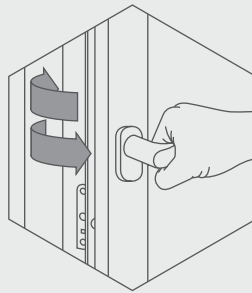
deceuninck

Leicester Window Supplies Ltd
1309 Melton Road, Syston, Leicester, LE7 2EN
Tel: 0116 266 5088
admin@leicesterwindowssupplies.co.uk •
www.leicesterwindowssupplies.co.uk

Care Tips for Deceuninck PVC Windows and Doors



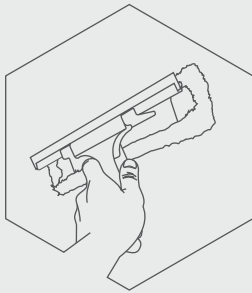
1 Remove Lime and Mortar Splashes



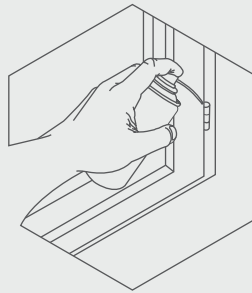
2 Ventilate rooms several times a day



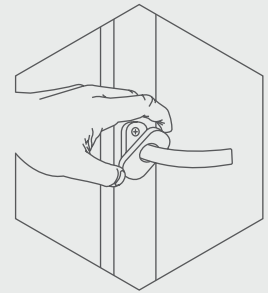
3 Do not use caustic fluids



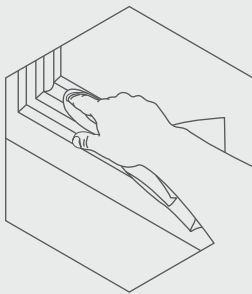
4 Regular cleaning on the outside



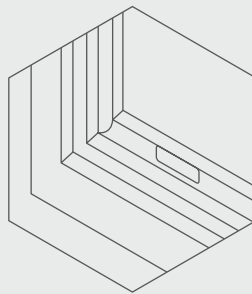
5 Lubricate fittings



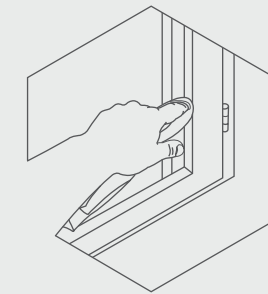
6 Tighten handles



7 Care for the seals



8 Clean drainage openings



9 Constant cleaning of the folds

- 1 Avoid lime and mortar splashes on the profile, glazing and fittings. Both the profile and the glazing could be damaged and fittings jammed as a result of solidified mortar residue.
- 2 An inflow of colder air lowers the relative humidity in the room and creates a healthier room climate. Preferably ventilate the living area several times a day, as a relative humidity of over 60 % can lead to mould growth.
- 3 For normal cleaning of the frame surface use a solution of mild dishwashing liquid. Do not use scouring agent, paint thinner or . For stubborn dirt always use special cleaning agents that can be obtained from the window supplier or from a window specialist.
- 4 Clean the outside of your windows regularly. Pollen, tar or ferrous particles may be burned in by the sun's rays. Once a layer has deposited it is not easy to remove.
- 5 Lubricate the fittings at least once a year to ensure ease of movement at all times.
- 6 Always tighten loose window handles. You can find the screws by lifting the cap under the handle and turning it out of the vertical into a horizontal position.
- 7 Rub the seals in the frame twice a year with sealing agent e.g. talcum, deer tallow or silicon oil (from specialists), to keep them soft and in good working order. Damaged seals have to be replaced.
- 8 Check the drainage openings in the frame profiles every now and again. Cleanliness is important for satisfactory drainage.
- 9 To avoid deposits and mould you should regularly check the window aperture folds and remove dirt if necessary.



Leicester Window Supplies Ltd
1309 Melton Road, Syston, Leicester, LE7 2EN

Tel: 0116 266 5088
admin@Leicesterwindowssupplies.co.uk •
www.leicesterwindowssupplies.co.uk